



KETLEY PARISH NEWS

March 2018

SPRING HAS SPRUNG!!!

“Welcome to the March edition of the new look Ketley Parish News. I hope that despite the extended Winter conditions we’ve experienced this year, that 2018 has got off to a good start for you all and brings happiness.

I am pleased to announce that the Council has now appointed a new Clerk, Emma Atwell, who is based full time at the Community Centre, so please do not hesitate to get in touch with Emma if you have any local issues you would like to discuss.

Our next community event will take place over Easter and we look forward to seeing you and your families all there!”
Cllr Amrik Jhawar, Chairman



JOIN IN... THE BIG EASTER EGG HUNT IS BACK!!!

The popular annual community event is back again this year and will take place on **Saturday 31st March from 10am—2pm at Ketley Community Centre**. There is **FREE** entry to the Easter Egg Hunt and once you’ve registered you’ll go on foot across Ketley Paddock Mound to find the clues that will lead you to the egg—just make sure you’re dressed appropriately for the weather! They’ll be lots of other activities too including arts & crafts, face painting and sweet treats plus refreshments which should keep both children and adults entertained!



Easter eggs have been kindly donated by Magna Foods and they’ll be a special prize hidden inside one of them. There is parking on site at the Centre, but as it’s limited, you may want to leave the car at home.

To help you plan your day, here is the programme for the **Easter Eggstravaganza...**

- 10am—11.45am**
Arts & Crafts Workshop with Arty Party
- 12.15pm—2pm**
Sweet Treats Workshop with Miss Chief Cakes
- 10am—2pm**
Face Painting with Smiley Faces

There’s no need to book as all the sessions are on a drop in basis and activities are designed to be no more than 20 minutes each.

Entry to the Easter Egg Hunt is throughout the event and should take around 45 minutes to complete.

Refreshments including coffee, tea, squash and hot cross buns will be available from 10am in the main Hall until 2pm.



JOHN’S A WINNER!!!

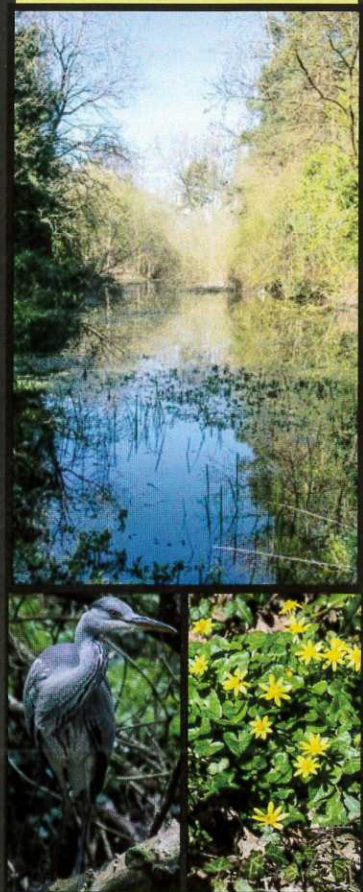
Congratulations to John Broadhurst who won 1st prize in the Christmas raffle of a luxury hamper. Patricia Bates took the 2nd prize of Farmfood vouchers.

A BIG THANK YOU!!!

Thanks to the generosity of our local residents, almost £90 was collected on ‘Voucher Day’ for donations to the Severn Hospice at Christmas.

GOOD COMPANIONS...

If you are over 55 and looking to get out more this year, why not contact the Ketley Good Companions on 01952 223170. They meet socially every week.



KETLEY PARISH COUNCIL



- INSIDE -

- P.1 Easter fun!!!
- P.2 It’s Project Mural...
- P.3 Competition time!!!
- P.4 Hidden gems...



Not just for boys!!!

1st Ketley Company meet on Fridays every week from 6—7:30pm at Ketley Methodist Church. The group for children and young people aged 4 ½ up to 18 years is run by Lt John Smith and includes games & crafts, basic drill, charity work and even trips out! Girls are now very welcome to join the Brigade and at just £2 per week, it's good value for money. For more information, contact John on 01952 505731.

EASTER @ ST MARY'S...

Services during Holy Week will be on Wednesday 29th March at 7pm which will be entitled 'Betrayal, Denial and Doubt' and provide a time for reflection. On Good Friday 30th March at 7pm is the Service of Shadows. Then on Easter Sunday morning at 11am there is a Holy Communion service.



And for those used to a more formal service, you'll find some changes on the first and third Sundays of the month with a very relaxed get-together style worship which includes a chance to chat over a cuppa or two and experience the fellowship of the Church. All services on Sundays now commence at 11am and Communion is held on alternate weeks. For more details contact Rev Heather Page by email

...and the METHODIST CHURCH

For details of Easter services at Ketley Methodist Church, contact the Warden on 01952 244232 or call in to find out more.

NEWS FROM THE TOP...

When you're at the Red Lake Garden of Rest cemetery, you feel like you're on the top of the world. The views are stunning and especially when the sun is shining. Unless you've had cause to visit it's probably something that you've not given much thought to and perhaps don't want to, but the fact is that the cemetery is filling up quickly and as a local resident if you want your remains interred at the Garden of Rest, you need to reserve a plot. And as the costs go up on the 1st April this year, now



is the time to guarantee your future and at the same time, removing the worry that these things leave our loved ones with. Exclusive Rights of Burial for 50 years is currently £375 and a cremation plot just £130, this will rise to £425 and £175 respectively from the 1st April. Burial's are limited to two per plot, but can accommodate up to a further six sets of ashes and interments are an additional charge usually arranged through your funeral director, but can be paid in advance if you wanted to ensure you avoid any future price increases. The cost of adding a headstone to an existing grave is being held, but the additional inscription charge is going up to £60 for residents in the Parish.

If you want more information about the cemetery including the criteria and costs or would like to apply for Exclusive Rights, you can visit the Council's website www.ketleyparishcouncil.co.uk to find the current costs and relevant forms on the Garden of Rest page or you can contact the Clerk on 01952 612035 or by email to contact@ketleyparishcouncil.co.uk

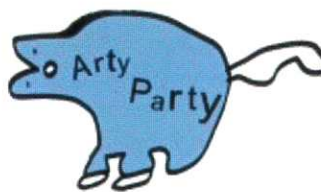
The Garden of Rest is now open 24 hours a day 7 days a week so you can visit throughout the year.

HAPPY BIRTHDAY TELFORD!!!

Telford was born in 1968 and this year celebrates 50 years. They'll be lots of events happening throughout the Borough to mark the occasion and here in Ketley we have an exciting new project starting this month to celebrate Telford's 50th Birthday...



Ketley Parish Council are working with Arty Party to produce a permanent memorial to commemorate the historic events over the past 50 years. Fran O'Boyle, Shropshire Artist and storyteller has been commissioned to collaborate with community groups to design and create a large scale mural on a 21 metre long external wall of Ketley Community Centre. The Mural Project led by Arty Party has been inspired by the building which is at the heart of the history and heritage of Ketley. Drawing on the knowledge of the Ketley History Group and Friends of Ketley Paddock Mound the project will involve members of Arty Party, Kreative Kidz, children from Meadows Primary School and other local groups.



The mural will tell the story of the area including landmarks and inhabitants over the changing times. The project will be unveiled at a celebration event over the Summer and the Parish Council is inviting local residents past and present to send in photographs, artifacts, stories and memories of Ketley that can be included for display at the event. Please email, write or call in to the Community Centre and we promise to return all documents left with us.



ON THE HERITAGE TRAIL..

Ketley History Group was founded in 2010 to promote awareness of Ketley's rich and unique history through talks, walks, visits, research and discussions. The next meeting which includes the AGM is on Tuesday 10th April from 7pm—9:00pm and will be a talk on Thomas Parker by Janet Doody. The group's annual guided 'Historic Ketley' walk is normally held in June and reveals many gems to be found in Ketley. For those unable to join the walk, the History Group hold an Open Evening—look out for confirmation of the date in due course. All events are held at Ketley Community Centre and everyone is warmly welcomed. For more about the Group and how to get involved, you can join them on Facebook search [theketleyhistorygroup](https://www.facebook.com/theketleyhistorygroup), ring Maggie on 01952 617029 or Dave on 01952 252459 or alternatively you can email ketleyhistorygroup@gmail.com

CHRISTMAS PAST...

Last Christmas was only a few months ago but Ketley Parish Council are already planning for this year's event! Thank you to everyone who helped make these community events a huge success including the pupils and staff of Meadows Primary School, Jemma Knight,



the staff and volunteers of the Council and all the local residents who came along to the Voucher Day and Christmas Lights Switch On.



WHATEVER HAPPENED TO THE INFANT SCHOOL???

In 2015 the school had a re-birth and the teachers there now run classes in dance, drama and musical theatre rather than maths, science and English! The school is home to The Telford Arts Centre or

TACT for short and talented young people from across the Borough are encouraged and supported by the incredible team—Ross, Ruth and Bobby—to take part in spectacular performances each year at Oakengates Theatre. If you've never seen one of their shows, you are missing a treat! You didn't need to be a feline fan to enjoy the last production which featured a cast of almost 100 strong, cats and



ROOMS FOR HIRE...

Ketley Community Centre now has even more rooms available to hire! The 'Rowley Room' provides flexible accommodation with a separate entrance that can also be hired in conjunction with the Hall to increase the capacity for parties. With prices from just £9 per hour, it's affordable too! You can find out information about all the rooms available and What's On at the Centre from the website www.ketleyparishcouncil.co.uk or ring 01952 612035 to arrange a viewing, discuss your requirements and find out prices. There is free parking for 50 vehicles, free wifi throughout and with five rooms served by two kitchens, the Centre can cater for both small and large events and even a bouncy castle!!!

LUS BONUS EASTER PRIZE!!!

kittens! Outstanding acting, singing and dancing, not to mention



the fabulous costumes, scenery, lighting and choreography. All in all it was a purrfect evening!!! TACT are busy rehearsing again for their next productions 'A New Brain' and 'Alice in Wonderland'. Tickets are always in big demand, so make sure you get yours when they are released soon. And if you have a talented youngster in the family, contact TACT on 07469 885184 or find them on Facebook, who knows they could be starring in the next performance!!!

NEW FOR 2018...

This year sees three more new groups making Ketley Community Centre their home! For inspiring young chefs there's Cook Stars every Saturday morning with plans for more classes midweek.



Places are strictly limited, so early booking is advised. Contact Natalie Portman on 07452 986431 or message through Facebook just search for [cookstarsstaffordandtelford](https://www.facebook.com/cookstarsstaffordandtelford).

Lucie Copner of Yoga One Kids is holding two sessions back to back on Friday afternoons from 4pm. The family friendly class which includes partner poses, story telling, games, relaxation and mindfulness. Ring 07493 778096 for more details or Facebook Lucie @yogaonekids.

And for the fitness conscious, there's Jungle Body Konga with Clare Bryan-Mason. It's a high intensity fusion of boxing, cardio and dance which is easy to follow to music through the decades. Contact Clare on 07741 288900 or email bryanclare@hotmail.com for details of the weekly classes.



ARE YOU EXPERIENCED???

That's what George will be asked when he gets back to school! George Price got in touch with Ketley Parish Council last Autumn asking if he could have a work experience placement at the Community Centre.

He's a Year 10 pupil studying at Charlton School and has a real passion for business. The Parish Council are always keen to foster the future ambitions of young people and were delighted to offer George a placement. He is spending a week at the Centre learning more about customer service, administration, finance, the day to day running of the Centre's business and the work of the Council which includes the Garden of Rest, street lighting, grounds & street cleansing and maintenance. Work experience applications for next year will be considered in October and are generally routed through school, but if your budding entrepreneur is interested in a placement here, please contact the Clerk by email contact@ketleyparishcouncil.co.uk



COMPETITION TIME...

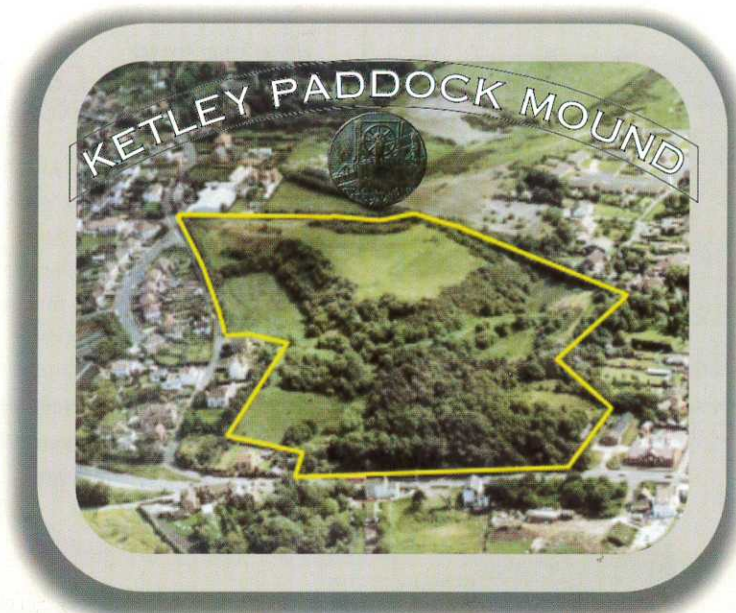
This is a straightforward wordsearch but there is one word you won't find. Message Ketley Parish Council on Facebook, email contact@ketleyparishcouncil.co.uk or write in with the missing answer and your name, address and contact number. For a bonus prize, where would you find it? All correct answers will be entered into a draw and the prize winner's name published in the next newsletter.

K	K	N	I	G	R	I	V	E	H	T	Y	R	A	M	T	S	C	Y	P
W	E	V	H	L	P	O	G	L	A	D	E	B	T	D	D	O	O	Y	A
I	S	T	O	R	Q	K	K	M	U	I	N	N	E	L	L	I	M	Z	D
L	P	I	L	X	U	O	K	E	L	N	Y	J	H	I	I	F	M	D	D
L	S	D	D	E	G	F	Q	A	G	G	Y	Y	Q	S	L	F	U	I	O
I	K	H	S	I	Y	Z	Z	D	C	L	D	T	N	T	L	A	N	A	C
A	D	S	C	Z	O	A	F	O	B	E	B	L	K	P	U	E	I	K	K
M	W	Q	H	U	H	O	A	W	A	C	I	H	Q	E	I	X	T	N	M
R	K	J	O	V	U	U	Y	S	Y	C	R	S	P	E	C	F	Y	S	O
E	B	R	O	O	K	N	Q	W	N	E	C	I	T	L	J	Z	C	Y	U
Y	M	T	L	V	O	Z	Z	U	R	F	K	R	R	E	A	V	E	E	N
N	Q	S	H	I	S	T	O	R	Y	L	U	A	A	I	Z	D	N	X	D
O	Z	D	T	X	H	C	X	U	P	B	M	P	L	H	P	B	T	O	D
L	Q	A	I	U	Y	W	A	B	V	W	R	V	E	D	E	D	R	L	B
D	T	A	P	T	X	R	A	O	C	T	P	Y	E	L	E	V	E	B	V
S	K	N	H	T	Z	J	T	S	E	R	F	O	N	E	D	R	A	G	D
Z	H	W	V	X	M	L	V	T	V	L	E	V	T	N	D	L	S	F	M
Z	K	Q	R	Y	O	X	E	N	A	L	P	D	E	N	I	L	C	N	I

- Beveley
- Brook
- Canal
- Community Centre
- Council
- Dingle
- Garden of Rest
- History
- Inclined Plane
- Ketley
- Lost Pool
- Meadows
- Millennium
- Old School
- Paddock Mound
- Parish
- Red Lake
- Station
- St Mary the Virgin
- William Reynolds

HIDDEN GEMS...

There are many hidden gems in Ketley, but amongst the most well kept secret is Ketley Paddock Mound... that is until now!!! If you've never ventured beyond Holyhead Road, you're in for a real treat. The 11 acre site formed from the spoils of mining in the 18th century comprises two mounds with adjacent pastures and three water bodies, the largest of which is the remnant of the Ketley Canal. The area which is enjoyed by walkers and nature lovers has Local Wildlife Site status and is currently awaiting confirmation that it will become a Local Nature Reserve. The main mound is 500 feet in height and affords magnificent views to the West and North. There is a considerable amount of history surrounding the Mound dating back to the 1700's and you can



find out more on the website ketleypaddockmound.co.uk. But why just read about it when you can experience the pleasure of the Mound personally? And if you are really passionate about nature and the outdoors, why not get involved and join the Friends of Ketley

Paddock Mound. The Friends meet regularly and hold organised 'working parties' twice a month. Everyone is welcome and as well as helping the environment and ensuring the area is a pleasant place for all to enjoy, it has health and social benefits too!

Weather permitting the parties are held on the first Thursday and third Sunday of the month. The Friends meet at the bus stop entrance on Holyhead Road at 10am and the session generally lasts around 2 hours. Plans for this year include installation of more benches and tables, additional planting and when the weather improves, a dipping platform!

For more information about the Friends, you can contact the Secretary, Wendy Stubbs on 01952 618692 or visit their Facebook page, just search for Friends of Ketley Paddock Mound.

So, if you've never stumbled across the Mound on your travels, Spring is the perfect time to go on a discovery of your own and find Ketley's Hidden Gem... but don't tell everyone, it's a secret!!!



FREE DOG POOP BAGS!!!

Be a Scooper Hero and help wage the war against dog fouling! FREE bags are available to collect from the Community Centre and from our PET Officer, Jason Hanley who can be found around and about the Parish every day.

LITTER PICKERS AT THE READY FOR KETLEY'S BIG SPRING CLEAN...

Ketley are linking in with Keep Britain Tidy's campaign this year and will be holding a 'Big Spring Clean' over the Easter holidays. Everyone is welcome to get involved and you can even bring your own litter picker if you have one! They'll be two sessions led by one of your local Parish Councillors along with our PET Officer. Starting out from Ketley Community Centre on Thursday 12th April at 10am and 1pm, you'll be provided with everything you need to help clean up Ketley, just make sure you're dressed appropriately!



KETLEY PARISH COUNCIL

You can contact the Clerk by telephone on 01952 612035, by email to parishclerk@ketleyparishcouncil.co.uk or in person at Ketley Community Centre. All the details for your local Parish Councillor are on the website www.ketleyparishcouncil.co.uk or you can contact the Clerk for a hard copy.

KETLEY COMMUNITY CENTRE

Holyhead Road, Ketley
Telford TF1 5AN
01952 612035
enquiries@ketleyparishcouncil.co.uk

The Centre will be closed for Easter from Sunday 1st April to Monday 2nd April 2018 inclusive re-opening for business on Tuesday 3rd April.



FOODBANK DONATION

Cllr Sam Millward-Thomas delivered a donation of selection boxes to the Foodbank on behalf of the Parish Council just in time for Christmas! They were well received by the Telford Crisis



Network who support those in need during difficult times. Please ring 01952 380290 if you need help or want to donate.

COUNCIL MEETING DATES FOR YOUR DIARY...

The Parish Council meet every month at Ketley Community Centre. The meetings are public and there is an opportunity at the start of every meeting for local residents to ask questions of the councillors who were elected to represent you locally and are responsible for public monies spent in the Parish. At the Annual Parish Meeting the Council will present a report to the



public on performance and proposals for future spend at which you will have the chance to have your say. The Council also hold Finance and Resources Committee meetings at which the public are welcome to attend. The dates, agendas and minutes of all Council meetings are published on the Council's noticeboard at the Community Centre, on the website www.ketleyparishcouncil.co.uk as well as on social media. For more details you can contact the Clerk on 01952 612035.

SPONSORSHIP DEALS

This edition of the Ketley Parish Council's newsletter has kindly been part sponsored by CDP Printing & Graphics located at Unit 43, Ketley Business Park. The Council is keen to work with local businesses and if you are interested in sponsorship, email contact@ketleyparishcouncil.co.uk to find out more about it.

